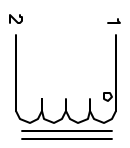


The information contained in this drawing is the sole property of CWS Coil Winding Specialist. Any reproduction in part or whole without written permission of CWS Coil Winding Specialist is prohibited.

REVISION HISTORY			
REV	ECN	DESCRIPTION	DATE
A		PRODUCTION RELEASE	2/9/04

SIGN & DATE			
DR	DATE	CHK	DATE
TKK	2/08/04	JLW	2/9/04



SCHEMATIC

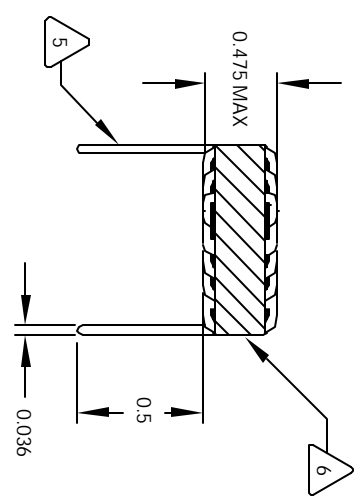
- USING A PERMANENT MARKING METHOD MARK PART NUMBER AND REVISION, IF APPLICABLE IF NEEDED, WRAP INDUCTOR WITH GLASS TAPE

- TO THE CORE MUST REST FLAT ON PCB. LEADS MUST BE TANGENT FLUSH WITH THE COIL EDGE, AS SHOWN (I.E. COIL REMOVE INSULATION AND TIN LEADS 0.5 INCH

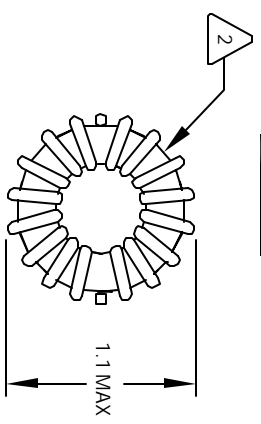
- WIND COILS EVENLY SPACED AROUND THE CORE CONSTRUCTION:

- HI-POT TEST FOR WINDING TO CORE ISOLATION = 500VDC MIN CURRENT RATING : 4.9 AMPS, 40 °C TEMP. RISE, NO AIR FLOW DCR = 44.0 MILLI-OHMS MAX. DC BIASED = 4.9 AMPS, INDUCTANCE = 84 UH DC BIASED = 8.2 AMPS, INDUCTANCE = 80 UH INDUCTANCE = 100 UH +-10% @ LOW DC BIAS, 1 KHZ, 250mV SPECIFICATIONS:

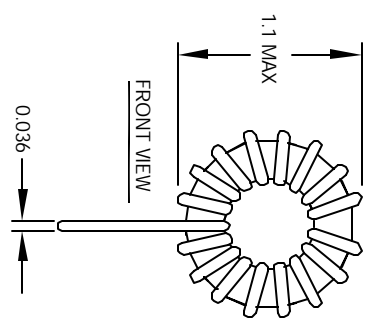
- WIRE: UL RECOGNIZED 200°C RATED MAGNET WIRE CWS BYTE-MARK OR OTHER APPROVED PART CORE: COATED HIGH FLUX TOROIDAL CORE
 - RATING CLASS B (130°C MIN.) REQUIRED MATERIAL: UL RECOGNIZED 94V-0 FOR FLAMMABILITY
- NOTES: TOROIDAL POWER CHOKE. ALL DIMENSIONS IN INCHES



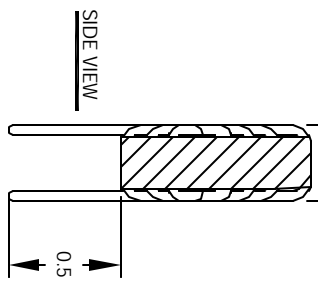
FRONT VIEW



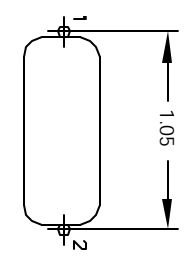
BOTTOM VIEW



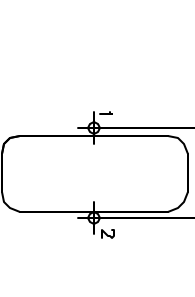
FRONT VIEW



SIDE VIEW



MOUNTING HOLES PATTERN



MOUNTING HOLES PATTERN

CODE IDENT	MFG. P/N	DESCRIPTION	ITEM NO.
		PARTS LIST	
AUTOCAD	X		
SOLIDWORKS			
SIGN	DATE		
DRAWN	TKK	2/8/04	
CHG'D	JLW	2/9/04	
ENGR	KSUN	3/6/04	
APP'R	JLW	3/8/04	
		SIZE DIM. UN.	REV
		B	B
		SCALE	HF229-101M-4.9A
		2=1	SHEET 1 OF 1

UNLESS OTHERWISE SPECIFIED			
TOLERANCING AND TOLERANCE PER ANSI Y14.5M	TOLERANCES ARE IN INCHES AND (MULTIPLY BY)		
FRACTIONS	±.005	DECIMALS	±.005
ANGLES	±.030°	ANGLES	±.030°
DO NOT SCALE DRAWING			

TITLE:	
Toroidal Power Chokes	
Toroid Inductor	

CWS Coil Winding Specialist	
1510 E. Edinger Ave.	
Unit B, Santa Ana, CA 92705	
WWW.COWS.COM	